



GRAND-DUCHÉ DE LUXEMBOURG

Ministère du Développement durable
et des Infrastructures

Département des Transports

L-2938 Luxembourg

SOCIÉTÉ NATIONALE DE
CERTIFICATION ET D'HOMOLOGATION

s.à r.l.

Registre de Commerce: B 27180

L-5201 Sandweiler

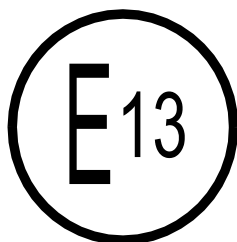


Référence: E13*50R00*50R00*34842*00

Annexes: - Rapport technique
- Fiche de renseignements du constructeur

Luxembourg, le 09 août 2017

COMMUNICATION



concernant 2/: - **HOMOLOGATION ACCORDEE**
concerning 2/: APPROVAL GRANTED
- ~~**HOMOLOGATION PROROGEE**~~
APPROVAL EXTENDED
- ~~**HOMOLOGATION REFUSEE**~~
APPROVAL REFUSED
- ~~**HOMOLOGATION RETIREE**~~
APPROVAL WITHDRAWN
- ~~**ARRET DEFINITIF DE LA PRODUCTION**~~
PRODUCTION DEFINITELY DISCONTINUED

**d'un type de feux-position avant, des feux-position arrière, des feux-stop, des indicateurs de direction
et des dispositifs d'éclairage de la plaque d'immatriculation arrière pour les cyclomoteurs,
les motocycles et les véhicules y assimilés en application du Règlement N° 50**
of a type of front position lamps, rear position lamps, stop lamps, direction indicators and
rear-registration-plate illuminating devices for mopeds, motor cycles and vehicle treated as such
pursuant to Regulation N° 50

Numéro d'homologation: E13*50R00*50R00*34842*00
Approval number:

Marque d'homologation: refer to the manufacturer's information document
Approval mark:

- 1. Marque de fabrique ou de commerce du dispositif:** ST
Trade name or mark of the device:
- 2. Désignation du type de dispositif par le fabricant:** ST-233F
Manufacturer's name for the type of device:
- 3. Nom et adresse du fabricant:** Yuan Jeou Industrial Company Limited
Manufacturer's name and address: N° 80, Yong An Road, Annan District, Tainan City,
Taiwan, Republic of China

4. **Nom et adresse du mandataire du fabricant (le cas échéant):** not applicable
If applicable, name and address of the manufacturer's representative:
5. **Dispositif soumis à l'homologation le:** 25.11.2016
Submitted for approval on:
6. **Autorité déléguée:** *Société Nationale de Certification et d'Homologation L-5201 Sandweiler*
Assigned authority:
- Service technique chargé des essais:** Luxcontrol SA
Technical service responsible for conducting approval tests: B.P. 349
L-4004 Esch-sur-Alzette
7. **Date du procès-verbal délivré par ce service:** 25.07.2017
Date of report issued by that service:
8. **Numéro du procès-verbal délivré par ce service:** LCA 51 0736 009 17
Number of report issued by that service:
9. **Description sommaire 3/:**
Concise description 3/:
- **Par catégorie de feux:** front and rear direction indicator: category 11 & 12
By category of lamp:
 - **Couleur de la lumière émise 2/:** ~~rouge~~ / ~~blanc~~ / ~~ambre~~
Colour of light emitted 2/: red / white / amber
 - **Nombre et catégories de source lumineuse:** 12 x LED, non-replaceable, 2.7W
Number and category (ies) of light source(s):
 - **Module d'éclairage 2/:** ~~oui~~ / non
Light source module 2/: yes / no
 - **Code d'identification propre au module d'éclairage:** not applicable
Light source module specific identification code:
 - **Conditions géométriques de montage et variantes éventuelles:** not applicable
Geometrical conditions of installation and relating variations, if any:

- Le dispositif de régulation électronique de la source lumineuse ou du régulateur d'intensité:

Application of an electronic light source control gear/ variable intensity control:

a) fait partie du feu 2/:

a) being part of the lamp 2/:

~~oui~~ / non

yes / no

b) ne fait pas partie du feu 2/:

b) being not part of the lamp 2/:

~~oui~~ / non

yes / no

- Tension(s) d'alimentation du dispositif de régulation électronique de la source lumineuse ou du régulateur d'intensité:

Input voltage(s) supplied by an electronic light source control gear / variable intensity control:

not applicable

- Nom du fabricant et numéro d'identification du dispositif de régulation électronique de la source lumineuse ou du régulateur d'intensité (lorsque le dispositif de régulation de la source lumineuse fait partie du feu mais n'est pas incorporé dans son boîtier):

Electronic light source control gear/variable intensity control manufacturer and identification number (when the light source control gear is part of the lamp but is not included into the lamp body):

not applicable

- Uniquement pour une hauteur de montage limitée, égale ou inférieure à 750 mm au-dessus du sol 2/:

Only for limited mounting height of equal to or less than 750 mm above the ground 2/:

~~oui~~ / non

yes / no

- Fonction(s) assurée(s) par un feu interdépendant faisant partie d'un système de feux interdépendants:

Function(s) produced by an interdependent lamp forming part of an interdependent lamp system:

- Feu de position avant 2/:

Front position lamp 2/:

~~oui~~ / non

yes / no

- Feu de position arrière 2/:

Rear position lamp 2/:

~~oui~~ / non

yes / no

- Feu-stop 2/:

Stop lamp 2/:

~~oui~~ / non

yes / no

- Activation séquentielle des sources lumineuses (voir paragraphe 6.8 du présent Règlement) 2/:

Sequential activation of light sources (see paragraph 6.8 of this Regulation) 2/:

oui / ~~non~~

yes / ~~no~~

10.

Position de la marque d'homologation:

Position of the approval mark:

on the lens

11. **Motif(s) de la prorogation de l'homologation (le cas échéant):**
Reason(s) for extension (if applicable): not applicable
12. **Homologation 2/:**
Approval 2/: accordée / ~~prorogée~~ / ~~refusée~~ / ~~retirée~~
granted / ~~extended~~ / ~~refused~~ / ~~withdrawn~~
13. **Lieu:**
Place: Luxembourg
14. **Date:**
Date: 09 août 2017
15. **Signature:**
Signature:

Pour le Ministre du Développement durable
et des Infrastructures

Pour la SNCH



Marco FELTES
Inspecteur Principal 1^{er} en rang



Claude LIESCH
Directeur



16. Est annexée la liste des pièces déposées au Service administratif ayant délivré l'homologation, qui peuvent être obtenues sur demande.

The list of documents deposited with the Administrative Service which has granted approval is annexed to this communication and may be obtained on request.

voir "INDEX DU DOSSIER D'HOMOLOGATION" ci-joint / see "INDEX TO TYPE-APPROVAL REPORT"

2/ Biffer les mentions qui ne conviennent pas/ Strike out what does not apply

3/ En ce qui concerne les feux d'éclairage et de signalisation, lors de l'homologation d'un ensemble comprenant plusieurs feux fixes avec attribution d'un numéro unique, une seule fiche peut être rédigée. Il suffit de signaler:

- dans l'en-tête, le nom des feux en question;
- les numéros des directives pertinentes.

Dans ce cas, la rubrique "DESCRIPTION SOMMAIRE" sera rédigée en annexe et y figureront, le cas échéant, pour chaque feu:

- le nombre et la catégorie de lampe(s) à incandescence;
- la tension nominale;
- la catégorie du dispositif;
- la couleur de la lumière émise.

With regard to lighting and light-signalling lamps, when an assembly comprising several lamps designed by a single number has been approved, a single form may be prepared. It is sufficient to indicate:

- In the heading, the names of the lamps in question;
- The numbers of the various relevant regulations.

In this case, the item "CONCISE DESCRIPTION" is to be prepared as an annex containing the following information for each lamp, where applicable:

- Number and category of filament lamp(s),
- Rated voltage,
- Category of the device,
- Colour of light emitted.

4/ Pour les lampes équipées de sources lumineuses non remplaçables, indiquer le nombre et la consommation totale en watt des sources lumineuses.

For lamps with non-replaceable light sources indicate the number and the total wattage of the light sources.



GRAND-DUCHÉ DE LUXEMBOURG

Ministère du Développement durable
et des Infrastructures
Département des Transports

L-2938 Luxembourg

SOCIÉTÉ NATIONALE DE
CERTIFICATION ET D'HOMOLOGATION

s.à r.l.

Registre de Commerce: B 27180

L-5201 Sandweiler



Référence: E13*50R00*50R00*34842*00

Annexes: - Rapport technique
- Fiche de renseignements du constructeur

Luxembourg, le 09 août 2017

Index du dossier d'homologation Index to type-approval report

	Numéro d'homologation: Approval number:	E13*50R00*50R00*34842*00
	Révision: Revision:	00
	Marque de fabrique ou de commerce: Trade name or mark:	ST
	Type: Type:	ST-233F
1.	Procès-verbal d'essai: Test report:	N° LCA 51 0736 009 17
	- Technical report:	Pages 1 to 7
	- Index to information package:	Annex A - Page 1
	- Results of photometric tests:	Annex B - Pages 1 to 3
2.	Dossier du constructeur: Report of the manufacturer:	N° 17-0625
	- Information document:	Annex C - Pages 1, 2
	- Drawings of the device:	Annex C - Pages 3 to 5
3.	Autres documents annexés: Other documents annexed:	not applicable
4.	Date de délivrance de l'homologation initiale: Date of issue of initial type approval:	09.08.2017
5.	Date de la dernière délivrance de pages révisées: Date of last issue of revised pages:	not applicable
6.	Date de la dernière délivrance d'une homologation révisée: Date of last extension:	not applicable

TECHNICAL REPORT

No.: LCA 51 0736 009 17

Inspection concerning the

**APPROVAL OF FRONT AND REAR POSITION
LAMPS, STOP LAMPS, DIRECTION
INDICATOR LAMPS AND REAR
REGISTRATION PLATE LAMPS FOR
MOPEDS, MOTOR CYCLES AND VEHICLES
TREATED AS SUCH**

performed according to the

ECE- Regulation No. 50

Type: *ST-233F*

Manufacturer: *Yuan Jeou Industrial Company Limited
No.80, Yong-An Road, Annan District, Tainan
City, Taiwan, Republic of China*

Index:

1. GENERAL	2
2. INSPECTIONS AND THEIR RESULTS.....	4
3. EVALUATION OF TEST RESULTS	6
4. STATEMENT OF COMPLIANCE	7
ANNEX (BEGINNING WITH AN INDEX)	

A reproduction of this report and its annexes, except in full, is prohibited without the written permission of Luxcontrol s.a.

...



1. GENERAL

1.1 TEST PROVISIONS

The inspection was carried out according to the requirements of ECE-Regulation No. 50 –Supplement 18 to the Regulation in its original form, entered into force on October 8, 2016.

1.2 INFORMATION CONCERNING THE LAMP(S) AND THE REQUESTED APPROVAL

The following particulars are based on the previous type-approval as referred to on page 1 (if applicable).

1.2.1 () NUMBERING ACCORDING TO THE ECE COMPONENT TYPE-APPROVAL OF ECE-R50

[1.] Trade name or mark of the device:

ST

[2.] Manufacturer's name for the type of device:

ST-233F

[3.] Name and address of manufacturer:

Yuan Jeou Industrial Company Limited

No.80, Yong-An Road, Annan District ,Tainan City, Taiwan, Republic of China

[4.] Name and address of manufacturer's representative:

not applicable

[5.] Submitted for approval on:

25 November 2016



[9.] Concise description:

Type of lamp	Relevant Regulation	Number and category of light source(s)	Rated voltage [V]	Category of the device	Colour of light emitted
Front and Rear Direction Indicator	R50.00	12 x LED, non-replaceable, 2.7W	12V	11 & 12	Amber

Light source module: *yes / no*

Light source module specific identification code: *not applicable*

Geometrical conditions of installation and relating variations, if any: *not applicable*

Application of an electronic light source control gear/variable intensity control:

(a) being part of the lamp: *yes/no/not applicable*

(b) being not part of the lamp: *yes/no/not applicable*

Input voltage(s) supplied by an electronic light source control gear/variable intensity control: *not applicable*

Electronic light source control gear/variable intensity control manufacturer and identification number (when the light source control gear is part of the lamp but is not included into the lamp body): *not applicable*

Only for limited mounting height of equal to or less than 750 mm above the ground: *yes/ no*

Function(s) produced by an interdependent lamp forming part of an interdependent lamp system:

Front position lamp: *yes / no*

Rear position lamp: *yes / no*

Stop lamp: *yes / no*

Sequential activation of light sources (see paragraph 6.8. of this Regulation): *yes / no*

[10.] Position of the approval mark:

on the lens

[11.] Reason(s) for the Extension:

not applicable

...



2. INSPECTIONS AND THEIR RESULTS

2.1 VERSION OF THE TESTED ~~VEHICLE~~ / ~~TECHNICAL UNIT~~ / COMPONENT

Following samples have been used for testing:

- Sample 1: type ST-233F, left-hand side, after 1 and 30 minutes
- Sample 2: type ST-233F, right-hand side, after 1 and 30 minutes

2.2 INSPECTION ITEMS

	Location of test:	Date of receipt of test item:	Date of test:	Inspector of LUXCONTROL:
Main Report	ISOQA, Taiwan, ROC	25 November 2016	25 November 2016	L.Lee A.Tang T.Chen

The trade mark is marked clearly legible and indelible on the lens.

The rated voltage and the rated wattage of the non-replaceable light source (LEDs) / ~~the filament lamp categories~~ are clearly legible and indelible marked on the lens.

Spaces for the approval mark and additional symbols are provided on the lens as shown in Annex C, Page 4.

2.2.1 GENERAL SPECIFICATIONS

2.2.1.1 DEVICE

The colour of the light emitted is amber for front and rear direction indicator according to paragraph 9 of the Regulation.

2.2.2 PHOTOMETRIC TESTS

The light emitted was obtained with a voltage of 13,5 Volts. The non-replaceable light source consists 6 lines of 2 LEDs paralleled (see Annex C, Page 5) for front and rear direction indicator.

The photometric performance was measured in accordance with paragraph 8.1 and Annex 4, paragraph 3.1 of the Regulation.

The light distribution angles and levels of intensity have been measured in accordance with Annex 4 of the Regulation, based on the manufacturer's indication of the centre of reference and axis of reference.

For detailed results see Annex B, Page 1 to 2 of this report.



2.2.3 ILLUMINATING SURFACE

Vertical and horizontal outlines of the illuminating surface of the light-signalling device in relation to the centre of reference and in accordance with paragraph 2.1 of this Regulation and in accordance with paragraph 2.7.2. of ECE-Regulations N0.53 and N0.74:

Type of lamp	Distance to centre of reference [mm]			
	upward	downward	inboard	outboard
<i>Front and Rear Direction Indicator</i>	See annex B, page 3			

2.3 EXPLANATORY NOTE

2.3.1 GENERAL

Inspection results are only applicable to items which have been tested (unless otherwise noted).

2.4 TEST FACILITIES

Calibration of measuring and test equipment used to carry out the inspections is in accordance with ~~the EEC Directive and/or~~ ECE-Regulation stated in 1.1. of this report and with ISO 17025.



3. EVALUATION OF TEST RESULTS

3.1 VARIANTS AND EQUIPMENT COVERED

The tests carried out cover the following variations and equipment as far as these are relevant for the lamp(s):

- Left and right-hand side device

3.2 REMARKS

3.2.1 GENERAL:

The test results stated above and in Annex B are representative for the device mentioned above.



4. STATEMENT OF COMPLIANCE

The inspections and measurements carried out have shown the compliance of lamp described in this report and the attached Annex with the requirements of ECE-Regulation No. 50 – Supplement 18 to the Regulation in its original form, entered into force on October 8, 2016.

Shanghai, P.R.China, July 25, 2017

Luxcontrol s.a.
Service Homologation-automobile

Leonie Lee
Ingénieur-Inspecteur

Allen Tang
Ingénieur-Inspecteur

Annex

...



Index to the information package, including a summary in chronological order, concerning extensions and/or amendments

ECE type-approval No.: E13*50R00*50R--*--*00

Main Report

Technical Report No.: LCA 51 0736 009 17 Page 1 to 7

Composition of the Annex:

A: Index	Page 1
B: Test results	Page 1 to 3
C: Information folder	Page 1 to 5

Index to the information folder:

- manufacturer's information document (page 1 to 2)
 - drawings of the lighting device (page 3 to 5)
-



Results of the photometric tests of the front and rear direction indicator-Clear lens

Front and Rear Direction Indicator

Test Point	minimum (cd)	Sample. 1 (LH)		Sample. 2 (RH)		Result		max
HV (1min)	90	139.100	-	145.300	-	T	T	500
HV (30min)	90	-	131.800	-	139.400	T	T	500
10U 5L	18	65.392	61.960	56.035	53.760	T	T	500
10U 5R	18	65.223	61.800	67.094	64.370	T	T	500
5U 20R	9	23.989	22.730	38.201	36.650	T	T	500
5U 10R	18	71.977	68.200	84.251	80.830	T	T	500
5U V	63	131.712	124.800	120.493	115.600	T	T	500
5U 10L	18	67.049	63.530	49.823	47.800	T	T	500
5U 20L	9	25.118	23.800	20.232	19.410	T	T	500
H 10L	31.5	70.732	67.020	48.510	46.540	T	T	500
H 5L	81	122.319	115.900	116.323	111.600	T	T	500
H 5R	81	122.108	115.700	133.834	128.400	T	T	500
H 10R	31.5	73.043	69.210	91.308	87.600	T	T	500
5D 20R	9	27.345	25.910	34.720	33.310	T	T	500
5D 10R	18	62.996	59.690	81.583	78.270	T	T	500
5D V	63	105.750	100.200	127.997	122.800	T	T	500
5D 10L	18	66.183	62.710	44.101	42.310	T	T	500
5D 20L	9	28.379	26.890	19.335	18.550	T	T	500
10D 5L	18	58.289	55.230	44.955	43.130	T	T	500
10D 5R	18	52.294	49.550	54.910	52.680	T	T	500
minimum	0.3	0.540	0.512	0.780	0.748	T	T	500
maximum	0.3	72.016	68.237	79.570	76.339	T	T	500

*According to the manufacturer's technical description, the front and rear direction indicator light source were connected in parallel, one light source consists of 2 LEDs, if one LED fail at most 2 LEDs fail. The n-1 rule was checked compliance by calculation.



Results of the photometric tests of the front and rear direction indicator- Smoke lens

Test Point	minimum (cd)	Sample. 1 (LH)		Sample. 2 (RH)		Result		max
HV (1min)	90	131.000	-	131.300	-	T	T	500
HV (30min)	90	-	124.100	-	126.400	T	T	500
10U 5L	18	45.064	42.690	51.627	49.700	T	T	500
10U 5R	18	43.987	41.670	56.872	54.750	T	T	500
5U 20R	9	20.890	19.790	32.139	30.940	T	T	500
5U 10R	18	51.154	48.460	65.910	63.450	T	T	500
5U V	63	105.138	99.600	106.370	102.400	T	T	500
5U 10L	18	57.551	54.520	46.329	44.600	T	T	500
5U 20L	9	21.978	20.820	18.303	17.620	T	T	500
H 10L	31.5	61.858	58.600	45.976	44.260	T	T	500
H 5L	81	116.327	110.200	113.745	109.500	T	T	500
H 5R	81	115.166	109.100	113.433	109.200	T	T	500
H 10R	31.5	54.353	51.490	72.038	69.350	T	T	500
5D 20R	9	22.337	21.160	29.636	28.530	T	T	500
5D 10R	18	49.750	47.130	66.045	63.580	T	T	500
5D V	63	97.643	92.500	108.551	104.500	T	T	500
5D 10L	18	58.966	55.860	40.730	39.210	T	T	500
5D 20L	9	23.508	22.270	16.340	15.730	T	T	500
10D 5L	18	47.671	45.160	37.666	36.260	T	T	500
10D 5R	18	43.681	41.380	44.137	42.490	T	T	500
minimum	0.3	0.339	0.321	0.508	0.489	T	T	500
maximum	0.3	62.455	59.165	70.570	67.936	T	T	500

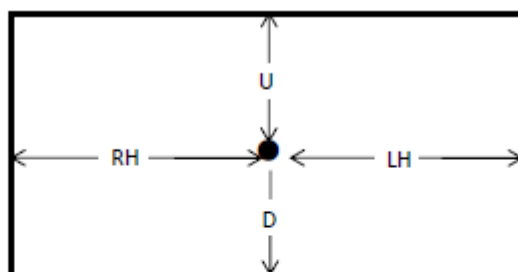
*According to the manufacturer's technical description, the front and rear direction indicator light source were connected in parallel, one light source consists of 2 LEDs, if one LED fail at most 2 LEDs fail. The n-1 rule was checked compliance by calculation.



Measurement of the colour of the light emitted:

Test Point	Sample 1		Sample 2		Remark
HV	x	y	x	y	T
Clear lens	0.6077	0.3918	0.6043	0.3957	
Smoke lens	0.5851	0.4148	0.6072	0.3924	

Determination of the apparent surface:



Device	upper edge (U) mm	lower edge (D) mm	LH edge (LH) mm	RH edge (RH) mm
Front and Rear Direction Indicator	5	5	30	30

Yuan Jeou Industrial Company Limited

No.80, Yong-An Road, Annan District, Tainan City,
Taiwan, Republic of China

TEL: 886-6-3564766

FAX: 886-6-3557186

MODEL INFORMATION DOCUMENT NO. 17-0625

ECE

APPLICATION DOCUMENTS

Device Name: ST-233F

Initial Application

Date: 18 July 2017

Manufacturer: Yuan Jeou Industrial Company Limited

Address: No.80, Yong-An Road, Annan District, Tainan City, Taiwan, Republic of China

I. SPECIFICATION DATE

1. FUNCTION, APPLICABLE REGULATION, LAMP & COLOUR:

TRADE MARK	ST		
FUNCTION	ECE APPLICABLE REGULATION	TYPE OF FILAMENT BULB	COLOUR OF EMIT
- Front and Rear Direction Indicator	R50.00 Category 11 12	LED x 12, 12V, 2.7 W	Amber

2. Drawing No.: ST-233F

3. MAKE: ST-233F

Yuan Jeou Industrial Company Limited

No.80, Yong-An Road, Annan District, Tainan City,
Taiwan, Republic of China

TEL: 886-6-3564766
FAX: 886-6-3557186

MODEL INFORMATION DOCUMENT NO. 17-0625

II. TECHNICAL DATA

1. CONSTRUCTION AND MATERIAL:

CONSTRUCTION	MATERIAL	REMARKS
Lens	PLASTIC	Clear / Smoke
Housing	PLASTIC	

2. LOCATION OF MARKING

MARKING		LOCATION
Trade mark	ST	On Lens
Lamp designation mark		
- Front and Rear Direction Indicator	11 & 12	On Lens

NOTE:

- Approval marking shall be shown in the attached drawing.
- Only for limited mounting height of equal to or less than 750 mm above the ground. yes/ no
- According to the manufacturer's technical description, the front and rear direction indicator light source were connected in parallel, one light source consists of 2 LEDs, if one LED fail at most 2 LEDs fail. The n-1 rule was checked compliance by calculation
- Direction Indicator : Sequential activation

Yuan Jeou Industrial Company Limited

ST-233F



Smoke lens



RearView



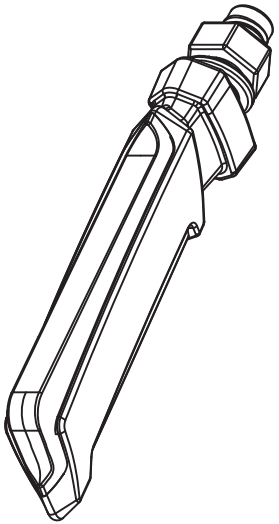
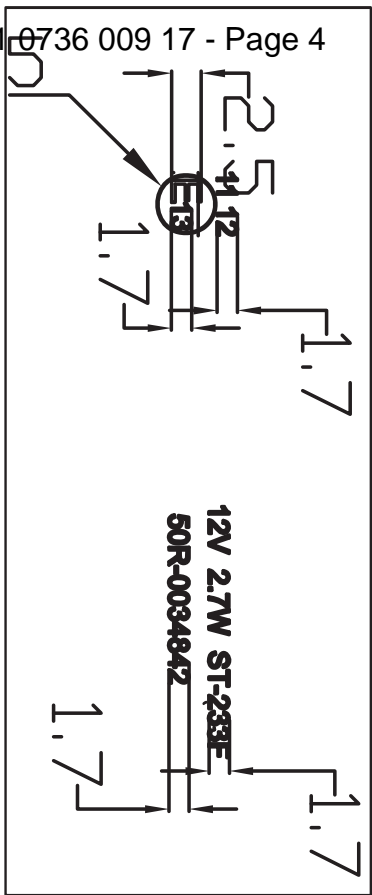
Clear lens
Front View



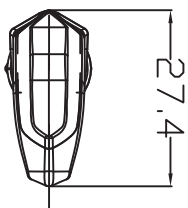
Side View



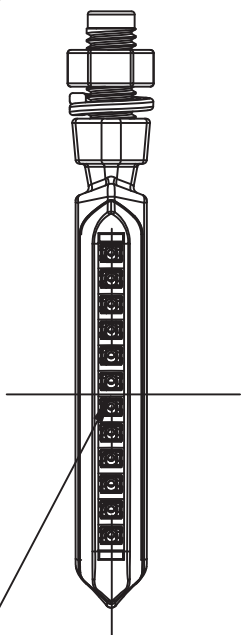
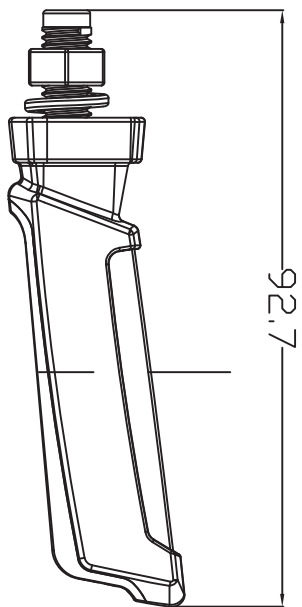
Top View



Axis of Reference
Horizontal Plane of Vehicle



Axis of Reference
Longitudinal Plane of Vehicle



Center of Reference
Front & Rear direction indicator
(12 x LEDs, 12 V 2.7 W)

Yuan Jeou Industrial Company Limited	
TYPE NAME	ST-233F
FUNCTION	Front & Rear direction indicator
DRAWING NO.	ST-233F

